

# **EPIC FANS** ***SUMMIT*** ***HVLS FAN***



## **Project Information**

Job Name \_\_\_\_\_

Address \_\_\_\_\_

Distributor \_\_\_\_\_

## **Certified For Construction**

By \_\_\_\_\_

Company \_\_\_\_\_

Date \_\_\_\_\_



[Epicfan.com](http://Epicfan.com)

## Quantity and Fan Diameter

\_\_\_\_\_ 8 ft (2.4 m)    \_\_\_\_\_ 10 ft (3.0 m)    \_\_\_\_\_ 12 ft (3.7 m)    \_\_\_\_\_ 14 ft (4.3 m)  
 \_\_\_\_\_ 16 ft (4.9 m)    \_\_\_\_\_ 18 ft (5.5 m)    \_\_\_\_\_ 20 ft (6.0 m)    \_\_\_\_\_ 24 ft (7.3 m)

## Control Options

- ☐ Wired Touch Screen
- ☐ Wired Touch Screen with Temperature Control
- ☐ Multi Fan Remote (2-6) Fans
- ☐ NEMA 4X Remote Enclosure
- ☐ NEMA 4X VFD Enclosure
- ☐ iFan 4.3 (12 Fans Max/3 Groups Max) \*120V Power Required
  - ☐ Temperature Control Option    ☐ BACnet TCP/IP
  - ☐ Humidity Option
- ☐ iFan 7.0 (24 Fans Max/4 Groups Max) \*120V Power Required
  - ☐ Temperature Control Option    ☐ BACnet TCP/IP
  - ☐ Humidity Option    ☐ BACnet MSTP
- ☐ iFan 10.0 (30 Fans Max/4 Groups Max) \*120V Power Required
  - ☐ Temperature Control Option    ☐ BACnet TCP/IP
  - ☐ Humidity Option    ☐ BACnet MSTP
- ☐ BMS Interface Card
  - ☐ Modbus TCP/IP    ☐ BACnet TCP/IP
  - ☐ BACnet MSTP    ☐ Slave Remote

## Mechanical Options

- ☐ Mounting Extensions \_\_\_\_\_ FT / M
- ☐ Extra Wide Beam Plate \_\_\_\_\_ inch wide beam
- ☐ Powder Coated Blades \_\_\_\_\_ RAL Color
- ☐ Powder Coated Frame & Mount \_\_\_\_\_ RAL Color
- ☐ Powder Coated Winglets \_\_\_\_\_ RAL Color
- ☐ Corrosion Resistant Package \*\*consult factory
- ☐ Black Anodized Blades
- ☐ Silver Anodized Blades
- ☐ Black Motor Covers
- ☐ Silver Motor Covers
- ☐ Laminated Wood Beam Brackets
- ☐ Truss Span Mounting Kit (consult factory)
- ☐ Z-Purlin Mounting Kit (consult factory)

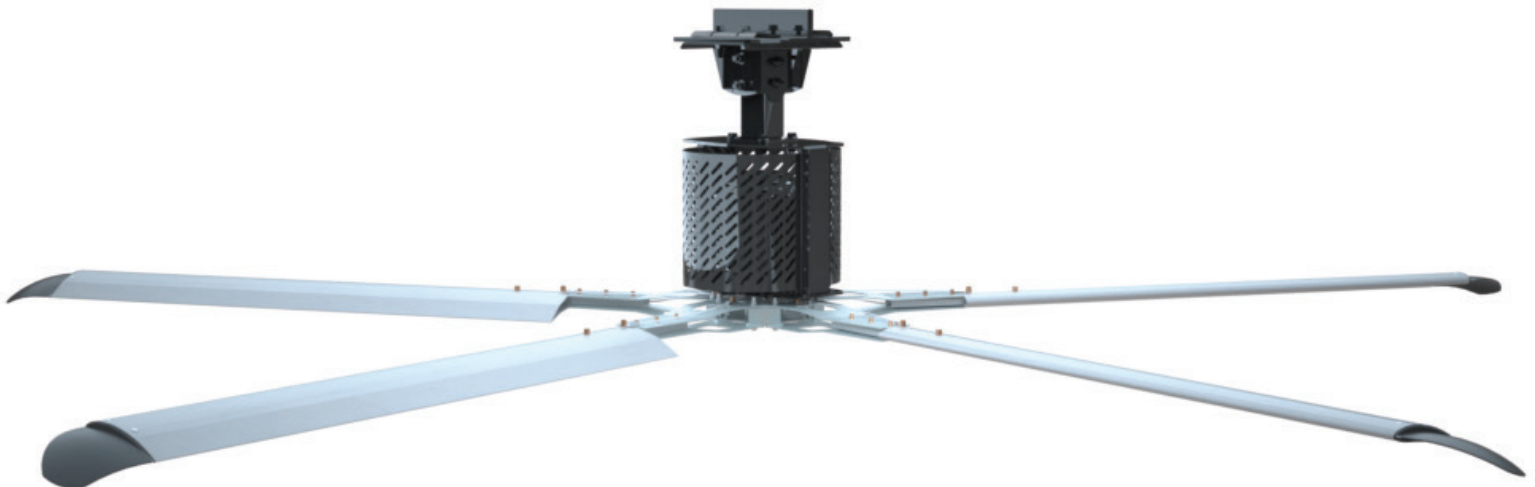
## Notes

## Voltage

- ☐ 120V Single Phase (8'-14')
- ☐ 208 - 240V Single Phase
- ☐ 208 - 240V 3 Phase
- ☐ 460 - 480V 3 Phase
- ☐ 575V 3 Phase

## Sizing Chart

	6022500, 6022504, 6022508, 6022512	6022501, 6022505, 6022509, 6022513	6022520, 6022542, 6022545, 6022517	6022502, 6022506, 6022510, 6022514	6022503, 6022507, 6022511, 6022515	6022540, 6022543, 6022546, 6022518	6022541, 6022544, 6022547, 6022519
<b>Voltage</b>	120V/1PH/50 60HZ	230V/1PH/50 60HZ	230V/1PH/50 60HZ	230V/3PH/50 60HZ	480V/3PH/50 60HZ	230V/3PH/50 60HZ	460V/3PH/50 60HZ
<b>FLA</b>	19.3A	12.6A	13.0A	7.3A	3.8A	7.5A	3.4A
<b>Fuse</b>	KTKR20	KTKR15	KTKR15	KTKR10	KTKR5	KTKR10	KTKR5
<b>Motor</b>	0.8kW/6A @ 230V/60HZ	0.8kW/6A @ 230V/60HZ	1.2kW/5.6A @ 230V/60HZ	0.8kW/6A @ 230V/60HZ	0.8kW/3A @ 460V/60HZ	1.2kW/5.6A @ 230V/60HZ	1.2kW/2.8A @ 460V/60HZ
<b>VFD</b>	100-115V 1PH 230V 3PH / 4.2A	200-240V 1PH 230V 3PH / 10A	200-240V 1PH 230V 3PH / 10A	200-240V 3PH 230V 3PH / 10A	380 480V/3PH 480V 3PH / 5A	200-240V 3PH 230V 3PH / 10A	380 480V/3PH 480V 3PH / 5A
<b>O/L</b>	6.0 A	6.0 A	5.6 A	6.0 A	6.0 A	5.6A	5.6 A





# SUMMIT HVLS FAN

## PRODUCT SPECIFICATIONS

### HIGH VOLUME LOW SPEED FAN

Construction	
Frame	Black Powder Coat / Welded Steel Fabrication
Hub Assembly	6061-T6 Aluminum
Blade Struts (Invertible)	Clear Zinc / High Tensile Steel
Blades	Anodized / 6063-T6 Aluminum
Blade End Winglets	Aluminum 3003-H14

Safety Components	
Steel Hub Plate	
Safety Cable	Galvanized 1/4" x 7 x 19 Steel Aircraft Grade Cable
Guy Wires	Galvanized 1/8" x 7 x 19 Steel Aircraft Grade Cable
Rotor Retaining Ring	Zinc Plated / 3/16 A569 Steel

Mounting Hardware	
Standard Mount	Universal I-Beam Clamp w/ Swivel Joint & Drop
Laminated Wood Beam Clamp (Optional)	Brackets
Extra Wide / Thick I-Beam Mount (Optional)	Consult Factory
Additional Drop Extensions (Optional)	Up to 10 FT in 1 FT Increments

Source Voltage	
Standard Power	120V 1Ø* or 208-230V 1Ø or 3Ø or 460-480V 3Ø or 575V 3Ø**

Motor	
Enclosure / Insulation Class / Efficiency Class	IP65
Motor	DC Brushless
Torque & Temperature Range	85 Nm / 188 Nm / 0 -122°F / -17.78 -50°C

VFD Assembly	
Enclosure	NEMA 1
Remote CAT 5E Cable	1 - 100 Feet / 30.48 Meters
Communication Protocol	Modbus RTU
Disconnect	Panel Mount, UL/CE
UL Certified	*50hz Operation (Optional)*

Fan Control Station	
Type	Touchscreen LCD
Connection	CAT 5E (provided)
Mounting	STD Wall J-Box

Warranty	
Lifetime Warranty on Blades, Hub & Frame	15-Year Mechanical
15-Year Non Pro Rated	7-Year Electrical
1-Year Labor	1-Year on all Controls

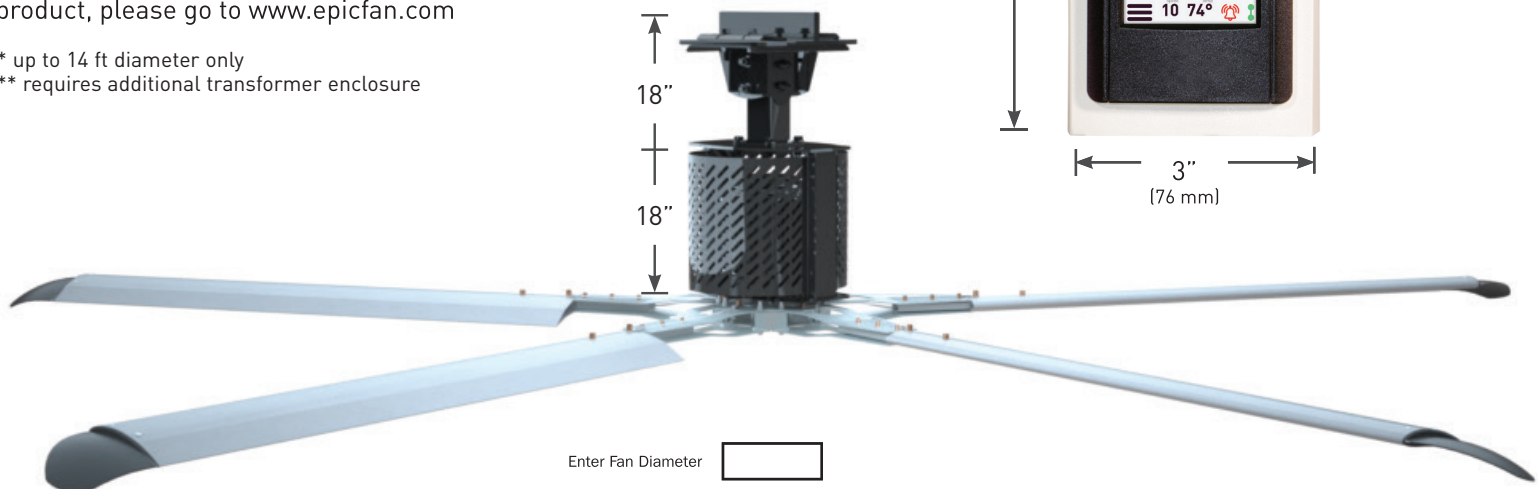
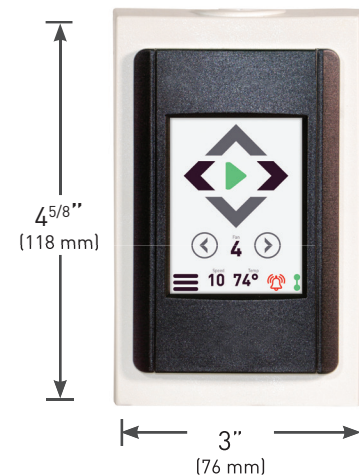
#### NOTICE

For more complete information on the application, proper use, maintenance and warranties for this product, please go to [www.epicfan.com](http://www.epicfan.com)

\* up to 14 ft diameter only

\*\* requires additional transformer enclosure

Fan Size	Hanging Weight	Normal Industrial Spacing	RPM
8 FT 85NM	166 lbs. (75 kg)	55 feet	198
10 FT 85NM	174 lbs. (79 kg)	60 feet	154
12 FT 85NM	183 lbs. (83 kg)	65 feet	125
14 FT 85NM	191 lbs. (86 kg)	70 feet	106
16 FT 188NM	216 lbs. (97 kg)	90 feet	92
18 FT 188NM	224 lbs. (101 kg)	95 feet	81
20 FT 188NM	232 lbs. (105 kg)	100 feet	72
24 FT 188NM	249 lbs. (112 kg)	110 feet	55



4Front Engineered Solutions reserves the right to change specifications and designs without notice and without incurring obligations. 4Front Engineered Solutions products may be the subject of one or more U.S. and/or foreign, issued and/or pending, design and/or utility patents. Epic and Epic Fans as words and logos are registered trademarks belonging to ASSA ABLOY Entrance Systems AB or other companies controlled by the same organization.

©ASSA ABLOY Entrance Systems. All Rights Reserved. Part of ASSA ABLOY

1612 Hutton Drive, Suite 140 • Carrollton, TX 75006, USA • Tel: 866-696-2464 • Fax: 972-389-4224 • [HVLSFans@epic.com](mailto:HVLSFans@epic.com) • [www.epicfan.com](http://www.epicfan.com)

# SUMMIT HVLS FAN

## PRODUCT SPECIFICATIONS

### HIGH VOLUME LOW SPEED FAN

Fan Size / Impeller Diameter	Calculated % of Max CFM	CFM *Tested to ANSI/AMCA Standard 230-15 HVLS*	Fan RPM	Input Power	Voltage / Phase / Frequency	Input Power W	Direction of Operation (Forward / Reverse)	Stand By Power	Integrated Efficiency (CFM / Watt) Overall Rating = 77.36
8'	100%	40,475	196	480 V / 3 PHASE	480 / 3 / 60	657	FORWARD	10.4 W	61.64
8'	80%	31,672	157	480 V / 3 PHASE	480 / 3 / 60	370	FORWARD	10.4 W	85.68
8'	60%	23,796	118	480 V / 3 PHASE	480 / 3 / 60	225	FORWARD	10.4 W	105.73
8'	40%	15,916	79	480 V / 3 PHASE	480 / 3 / 60	154	FORWARD	10.4 W	103.15
8'	20%	7,740	39	480 V / 3 PHASE	480 / 3 / 60	130	FORWARD	10.4 W	59.50
Fan Size / Impeller Diameter	Calculated % of Max CFM	CFM *Tested to ANSI/AMCA Standard 230-15 HVLS*	Fan RPM	Input Power	Voltage / Phase / Frequency	Input Power W	Direction of Operation (Forward / Reverse)	Stand By Power	Integrated Efficiency (CFM / Watt) Overall Rating = 102.98
10'	100%	59,606	154	480 V / 3 PHASE	480 / 3 / 60	716	FORWARD	10.8 W	83.30
10'	81%	47,719	124	480 V / 3 PHASE	480 / 3 / 60	442	FORWARD	10.8 W	107.96
10'	60%	34,926	92	480 V / 3 PHASE	480 / 3 / 60	244	FORWARD	10.8 W	142.97
10'	40%	23,239	62	480 V / 3 PHASE	480 / 3 / 60	169	FORWARD	10.8 W	137.94
10'	20%	10,945	31	480 V / 3 PHASE	480 / 3 / 60	132	FORWARD	10.8 W	82.82
Fan Size / Impeller Diameter	Calculated % of Max CFM	CFM *Tested to ANSI/AMCA Standard 230-15 HVLS*	Fan RPM	Input Power	Voltage / Phase / Frequency	Input Power W	Direction of Operation (Forward / Reverse)	Stand By Power	Integrated Efficiency (CFM / Watt) Overall Rating = 130.46
12'	100%	80,305	125	480 V / 3 PHASE	480 / 3 / 60	796	FORWARD	9 W	100.95
12'	80%	63,805	100	480 V / 3 PHASE	480 / 3 / 60	462	FORWARD	9 W	138.24
12'	60%	47,510	75	480 V / 3 PHASE	480 / 3 / 60	261	FORWARD	9 W	182.23
12'	40%	31,245	50	480 V / 3 PHASE	480 / 3 / 60	174	FORWARD	9 W	179.89
12'	20%	15,041	25	480 V / 3 PHASE	480 / 3 / 60	123	FORWARD	9 W	122.08
Fan Size / Impeller Diameter	Calculated % of Max CFM	CFM *Tested to ANSI/AMCA Standard 230-15 HVLS*	Fan RPM	Input Power	Voltage / Phase / Frequency	Input Power W	Direction of Operation (Forward / Reverse)	Stand By Power	Integrated Efficiency (CFM / Watt) Overall Rating = 148.74
14'	100%	106,143	106	480 V / 3 PHASE	480 / 3 / 60	982	FORWARD	10.3 W	108.08
14'	80%	84,784	85	480 V / 3 PHASE	480 / 3 / 60	532	FORWARD	10.3 W	159.51
14'	59%	62,625	63	480 V / 3 PHASE	480 / 3 / 60	289	FORWARD	10.3 W	216.78
14'	40%	41,616	42	480 V / 3 PHASE	480 / 3 / 60	181	FORWARD	10.3 W	230.12
14'	20%	20,288	21	480 V / 3 PHASE	480 / 3 / 60	127	FORWARD	10.3 W	159.39
Fan Size / Impeller Diameter	Calculated % of Max CFM	CFM *Tested to ANSI/AMCA Standard 230-15 HVLS*	Fan RPM	Input Power	Voltage / Phase / Frequency	Input Power W	Direction of Operation (Forward / Reverse)	Stand By Power	Integrated Efficiency (CFM / Watt) Overall Rating = 180.04
16'	100%	132,919	90	480 V / 3 PHASE	480 / 3 / 60	970	FORWARD	10.7 W	136.98
16'	80%	106,297	72	480 V / 3 PHASE	480 / 3 / 60	574	FORWARD	10.7 W	185.13
16'	60%	79,701	54	480 V / 3 PHASE	480 / 3 / 60	319	FORWARD	10.7 W	249.57
16'	40%	52,190	36	480 V / 3 PHASE	480 / 3 / 60	186	FORWARD	10.7 W	280.06
16'	20%	24,779	18	480 V / 3 PHASE	480 / 3 / 60	138	FORWARD	10.7 W	179.51
Fan Size / Impeller Diameter	Calculated % of Max CFM	CFM *Tested to ANSI/AMCA Standard 230-15 HVLS*	Fan RPM	Input Power	Voltage / Phase / Frequency	Input Power W	Direction of Operation (Forward / Reverse)	Stand By Power	Integrated Efficiency (CFM / Watt) Overall Rating = 195.76
18'	100%	164,103	81	480 V / 3 PHASE	480 / 3 / 60	1,136	FORWARD	10.2 W	144.43
18'	80%	131,713	65	480 V / 3 PHASE	480 / 3 / 60	637	FORWARD	10.2 W	206.85
18'	60%	99,141	49	480 V / 3 PHASE	480 / 3 / 60	361	FORWARD	10.2 W	274.22
18'	40%	63,637	32	480 V / 3 PHASE	480 / 3 / 60	201	FORWARD	10.2 W	317.34
18'	20%	29,406	16	480 V / 3 PHASE	480 / 3 / 60	148	FORWARD	10.2 W	199.24
Fan Size / Impeller Diameter	Calculated % of Max CFM	CFM *Tested to ANSI/AMCA Standard 230-15 HVLS*	Fan RPM	Input Power	Voltage / Phase / Frequency	Input Power W	Direction of Operation (Forward / Reverse)	Stand By Power	Integrated Efficiency (CFM / Watt) Overall Rating = 213.64
20'	100%	191,503	72	480 V / 3 PHASE	480 / 3 / 60	1,237	FORWARD	13 W	154.83
20'	81%	150,687	58	480 V / 3 PHASE	480 / 3 / 60	663	FORWARD	13 W	227.28
20'	61%	112,404	44	480 V / 3 PHASE	480 / 3 / 60	366	FORWARD	13 W	306.83
20'	40%	64,476	29	480 V / 3 PHASE	480 / 3 / 60	198	FORWARD	13 W	341.53
20'	19%	37,997	14	480 V / 3 PHASE	480 / 3 / 60	149	FORWARD	13 W	262.44
Fan Size / Impeller Diameter	Calculated % of Max CFM	CFM *Tested to ANSI/AMCA Standard 230-15 HVLS*	Fan RPM	Input Power	Voltage / Phase / Frequency	Input Power W	Direction of Operation (Forward / Reverse)	Stand By Power	Integrated Efficiency (CFM / Watt) Overall Rating = 280.71
24'	100%	237,716	55	480 V / 3 PHASE	480 / 3 / 60	1,193	FORWARD	11 W	199.33
24'	80%	189,628	44	480 V / 3 PHASE	480 / 3 / 60	641	FORWARD	11 W	295.67
24'	60%	135,762	33	480 V / 3 PHASE	480 / 3 / 60	336	FORWARD	11 W	404.32
24'	40%	88,311	22	480 V / 3 PHASE	480 / 3 / 60	188	FORWARD	11 W	468.97
24'	20%	53,577	11	480 V / 3 PHASE	480 / 3 / 60	143	FORWARD	11 W	375.96



4Front Engineered Solutions certifies that the Direct Drive model 8'- 24' shown herein is licensed to bear the AMCA seal. The ratings shown are based on the tests and procedures performed in accordance with AMCA Publication 211 and comply with the requirements of the AMCA Certified Ratings Program.

AMCA Certified ratings seal applies at free delivery only. Performance ratings do not include the effects of appurtenances (accessories).



4Front Engineered Solutions reserves the right to change specifications and designs without notice and without incurring obligations. 4Front Engineered Solutions products may be the subject of one or more U.S. and/or foreign, issued and/or pending, design and/or utility patents. Epic and Epic Fans as words and logos are registered trademarks belonging to ASSA ABLOY Entrance Systems AB or other companies controlled by the same organization.

©ASSA ABLOY Entrance Systems. All Rights Reserved. Part of ASSA ABLOY

1612 Hutton Drive, Suite 140 • Carrollton, TX 75006, USA • Tel: 866-696-2464 • Fax: 972-389-4224 • HVLSFans@epic.com • www.epicfan.com



E506041

ESF-SDHVLS-0321